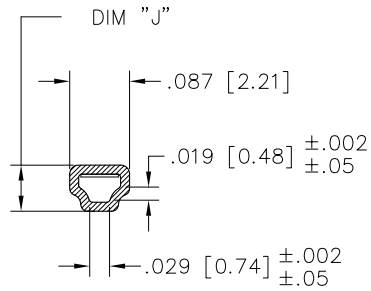
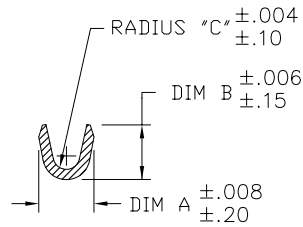


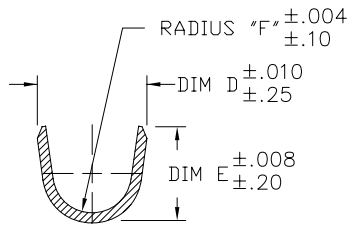
PRODUCT NUMBER
SEE TABLE



SECTION A-A

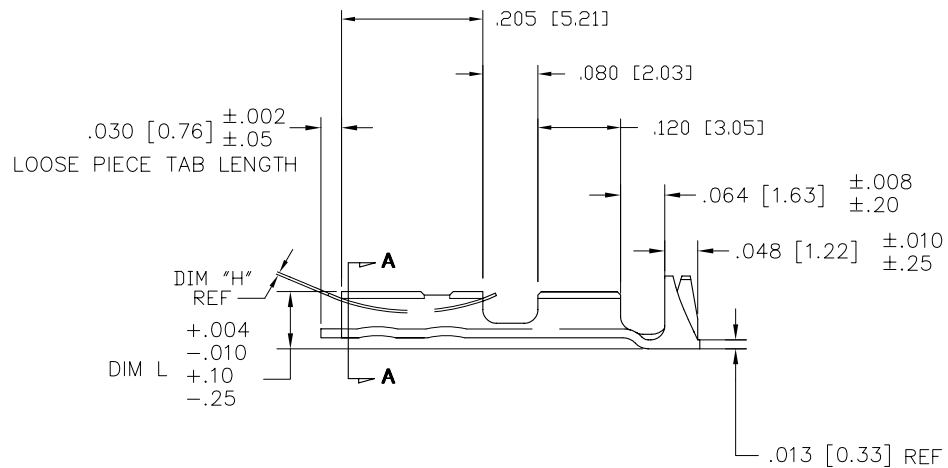
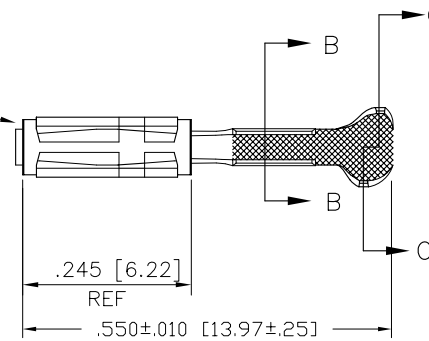


SECTION B-B
(N.T.S.)



SECTION C-C
(N.T.S.)

SIDES OF SPRING MAY NOT
EXTEND BEYOND SIDE OF
TERMINAL MORE THAN .004/.10



mat'l. code				surface	tolerance	projection	product family
SEE TABLE				✓			PV TERMINALS
ltr	ec'n no	dr	date	tolerances unless otherwise specified		INCH/MM	title
AA	v08-0113	HTB	2008-03-28	angles	.XX±.01 / .X±.3		MAXI PV™ RECEPTACLE CRIMP TO WIRE
-	-	-	-	linear	XXX+.005 / .XX+.13		
U	v71684	HTB	1997-12-17		XXXX+.0020 / .XXX+.051		
V	v05-0468	HTB	2005-05-27	dr	T. BREWBAKER	2006-04-18	sheet 1 of 3
W	v06-0218	HTB	2006-03-07	engr	T. BREWBAKER	2006-04-18	size
X	v06-0303	HTB	2006-04-18	chr	T. BREWBAKER	2006-04-18	A3
Y	v07-0218	HTB	2007-03-16	appd	T. BREWBAKER	2006-04-18	
sheet	revision	AA	AA	AA			type
index	sheet	1	2	3			Product Customer Drawing

PRODUCT NUMBER		AWG RANGE	MATERIAL AND PLATING		SPRING THICKNESS		BODY			
REELED	LOOSE PC.		BODY : 1/4 HD BRASS	SPRING : BE-CU HEAT TREATED	DIM H	DIM J	DIM L			
					ENGLISH	METRIC	ENGLISH	METRIC	ENGLISH	METRIC
46220-000	46224-000	18-20	OBS.							
46230-000	46234-000	22-26	OBS.							
46240-000	46244-000	28-32	OBS.							
46221-000LF	46225-000LF	18-20		40u" MIN GOLD OVER	0.0058	0.147	0.067	1.70	0.083	2.11
46231-000LF	46235-000LF	22-26		50u" MIN NICKLE Ni	0.0058	0.147	0.067	1.70	0.083	2.11
46241-000	46245-000	28-32	OBS.	CONTACT AREA (NOTE 4)	OBSOLETE					
46222-000LF	47418-000LF	18-20		75u" MIN GOLD OVER	0.0075	0.191	0.067	1.70	0.083	2.11
46232-000LF	47419-000LF	22-26		50u" MIN NICKLE Ni	0.0075	0.191	0.067	1.70	0.083	2.11
46242-000	47420-000	28-32	OBS.	CONTACT AREA (NOTE 4)	OBSOLETE					
46223-000LF	47387-000LF	18-20		40u" MIN GOLD OVER	0.0075	0.191	0.067	1.70	0.083	2.11
46233-000LF	47384-000LF	22-26		50u" MIN NICKLE Ni	0.0075	0.191	0.067	1.70	0.083	2.11
46243-000	47403-000	28-32	OBS.	CONTACT AREA (NOTE 4)	OBSOLETE					
46226-000LF	46227-000LF	18-20		40u" MIN GOLD OVER	0.0048	0.122	0.067	1.70	0.083	2.11
46236-000LF	46237-000LF	22-26		50u" MIN NICKLE Ni	0.0048	0.122	0.067	1.70	0.083	2.11
46246-000	46247-000	28-32	OBS.	CONTACT AREA (NOTE 4)	OBSOLETE					
46228-000	46229-000	18-20	OBS.		OBSOLETE					
46238-000	46239-000	22-26	OBS.	OBSOLETE	OBSOLETE					
46248-000	46249-000	28-32	OBS.		OBSOLETE					
46580-000	46581-000	18-20	OBS.		OBSOLETE					
46590-000	46591-000	22-26	OBS.	OBSOLETE	OBSOLETE					
46600-000	46601-000	28-32	OBS.		OBSOLETE					
47388-000	47391-000	18-20	OBS.		OBSOLETE					
47389-000	47392-000	22-26	OBS.	OBSOLETE	OBSOLETE					
47390-000	47393-000	28-32	OBS.		OBSOLETE					
47612-000			OBS.		OBSOLETE					
47613-000			OBS.	OBSOLETE	OBSOLETE					
47614-000			OBS.		OBSOLETE					
47621-000			OBS.	OBSOLETE	OBSOLETE					
47622-000			OBS.	OBSOLETE	OBSOLETE					
47653-000			OBS.	OBSOLETE	OBSOLETE					
47733-000			OBS.		OBSOLETE					
47734-000			OBS.	OBSOLETE	OBSOLETE					
47735-000			OBS.		OBSOLETE					
47736-000	46582-000	18-20	OBS.		OBSOLETE					
47737-000	46592-000	22-26	OBS.	OBSOLETE	OBSOLETE					
47738-000	46602-000	28-32	OBS.		OBSOLETE					
48188-000	48189-000	22-26	OBS.	OBSOLETE	OBSOLETE					

SEE SHEET 3 FOR PRODUCTS WITH LEAD-FREE TIN PLATING.

mat'l. code SEE TABLE				surface ✓	tolerance	projection ⊕	product family PV TERMINALS
ltr	ecn no	dr	date	tolerances unless otherwise specified		INCH/MM scale 1:1	title MAXI PV™ RECEPTACLE CRIMP TO WIRE
AA				angles	.XX±.01/.X±.3		
				linear	.XXX±.005/.XX±.13 XXXX±.0020/XXX±.051		
				dr	T. BREWBAKER	2006-04-18	FCJ type Product Customer Drawing
				engr	T. BREWBAKER	2006-04-18	
				chr	T. BREWBAKER	2006-04-18	
				appd	T. BREWBAKER	2006-04-18	
sheet index	revision sheet						dwg no 46220
							sheet 2 of 3
							size A3

PRODUCT NUMBER		AWG RANGE	MATERIAL AND PLATING		SPRING THICKNESS		BODY			
REELED	LOOSE PC.		BODY : 1/4 HD BRASS	SPRING : BE-CU HEAT TREATED	DIM H		DIM J		DIM L	
					ENGLISH	METRIC	ENGLISH	METRIC	ENGLISH	METRIC
46580-000LF	46581-000LF	18-20	HOT DIPPED TIN (NOTE 7)	TIN PLATED	0.0075	0.191	0.067	1.70	0.083	2.11
46590-000LF	46591-000LF	22-26			0.0075	0.191	0.067	1.70	0.083	2.11
46600-000LF	46601-000LF	28-32			0.0075	0.191	0.067	1.70	0.083	2.11
47388-000LF	47391-000LF	18-20	HOT DIPPED TIN (NOTE 7)	TIN PLATED	0.0058	0.147	0.067	1.70	0.083	2.11
47389-000LF	47392-000LF	22-26			0.0058	0.147	0.067	1.70	0.083	2.11
47390-000LF	47393-000LF	28-32			0.0058	0.147	0.067	1.70	0.083	2.11
47736-000LF	46582-000LF	18-20	HOT DIPPED TIN (NOTE 7)	TIN PLATED	0.0048	0.122	0.067	1.70	0.083	2.11
47737-000LF	46592-000LF	22-26			0.0048	0.122	0.067	1.70	0.083	2.11
47738-000LF	46602-000LF	28-32			0.0048	0.122	0.067	1.70	0.083	2.11

AWG RANGE	WIRE BARREL						INSULATION BARREL									
	DIM A		DIM B		DIM C		INSULATION DIA. RANGE FOR DISCRETE TERMINALS		INSULATION DIA. RANGE WHEN USED WITH MAXI LATCH HSG.		DIM D		DIM E		DIM F	
	ENGLISH	METRIC	ENGLISH	METRIC	ENGLISH	METRIC	ENGLISH	METRIC	ENGLISH	METRIC	ENGLISH	METRIC	ENGLISH	METRIC	ENGLISH	METRIC
18-20	0.110	2.79	0.110	2.79	0.021	0.53	0.042 - 0.103	1.07 - 2.62	0.042 - 0.060	1.07 - 1.52	0.139	3.53	0.123	3.12	0.050	1.27
22-26	0.070	1.78	0.070	1.78	0.017	0.43	0.036 - 0.103	0.91 - 2.62	0.036 - 0.060	0.91 - 1.52	0.139	3.53	0.123	3.12	0.050	1.27
28-30	0.054	1.37	0.058	1.47	0.011	0.28	0.028 - 0.054	0.71 - 1.37	0.028 - 0.054	0.71 - 1.37	0.115	2.92	0.110	2.79	0.040	1.02

NOTES:

- FOR DIMENSIONS OF WIRE BARREL AND INSULATION BARREL SEE TABLE.
- PART TO MATE WITH .025±.002 [0.64±0.05] SQ. PIN.
- APPLICABLE SPECIFICATIONS:
 - BUS-12-096 : PRODUCT SPECIFICATION
 - TA-213 : CRIMP SPECIFICATION FOR TERMINALS USED WITH MAXI-LATCH HOUSINGS.
 - TA-356 : CRIMP SPECIFICATION FOR CONTACTS NOT USED IN HOUSINGS.
- FINISH TO BE AS SPECIFIED IN CONTACT AREA. REMAINDER OF PART TO BE GOLD FLASH.
- PRODUCT MEETS EUROPEAN UNION DIRECTIVES AND OTHER COUNTRY REGULATIONS AS DESCRIBED IN GS-22-008.
- THIS PRODUCT IS NOT INTENDED TO BE EXPOSED TO MANUFACTURING SOLDER PROCESSES.
- THIS PRODUCT HAS 100% TIN PLATING IN THE INTERFACE AND HAS NOT BEEN TESTED FOR WHISKER GROWTH IN ALL INTERCONNECT ENVIRONMENTS.

mat'l. code SEE TABLE				surface	tolerance	projection	product family	
ltr	ecr no	dr	date	tolerances unless otherwise specified		 INCH/MM	title	
AA				angles	linear		.XX±.01/.X±.3 .XXX±.005/.XX±.13 .XXXX±.0020/.XXX±.051	MAXI PV™ RECEPTACLE CRIMP TO WIRE
							scale 1:1	
				dr	T. BREWBAKER	2006-04-18	sheet 3 of 3	
				engr	T. BREWBAKER	2006-04-18	size	
				chr	T. BREWBAKER	2006-04-18	A3	
				appd	T. BREWBAKER	2006-04-18	type	
sheet index	revision sheet						Product Customer Drawing	



Copyright FCI